



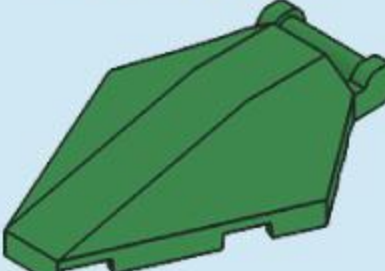





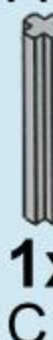





TOTAL PARTS LIST

 2x A486-00-28	 5x C288-00-28	 2x A060-00-28	 1x A989-00-28
 2x A788-00-28	 1x C143-00-28	 17x A535-00-28	 2x A513-00-28
 16x A170-00-192	 16x R058-00-192	 1x C119-03-194	 3x C174-02-26
 1x C092-16-28	 17x A800-00-322		

Brickcraft, LLC,
New York, NY 10018
Made in China

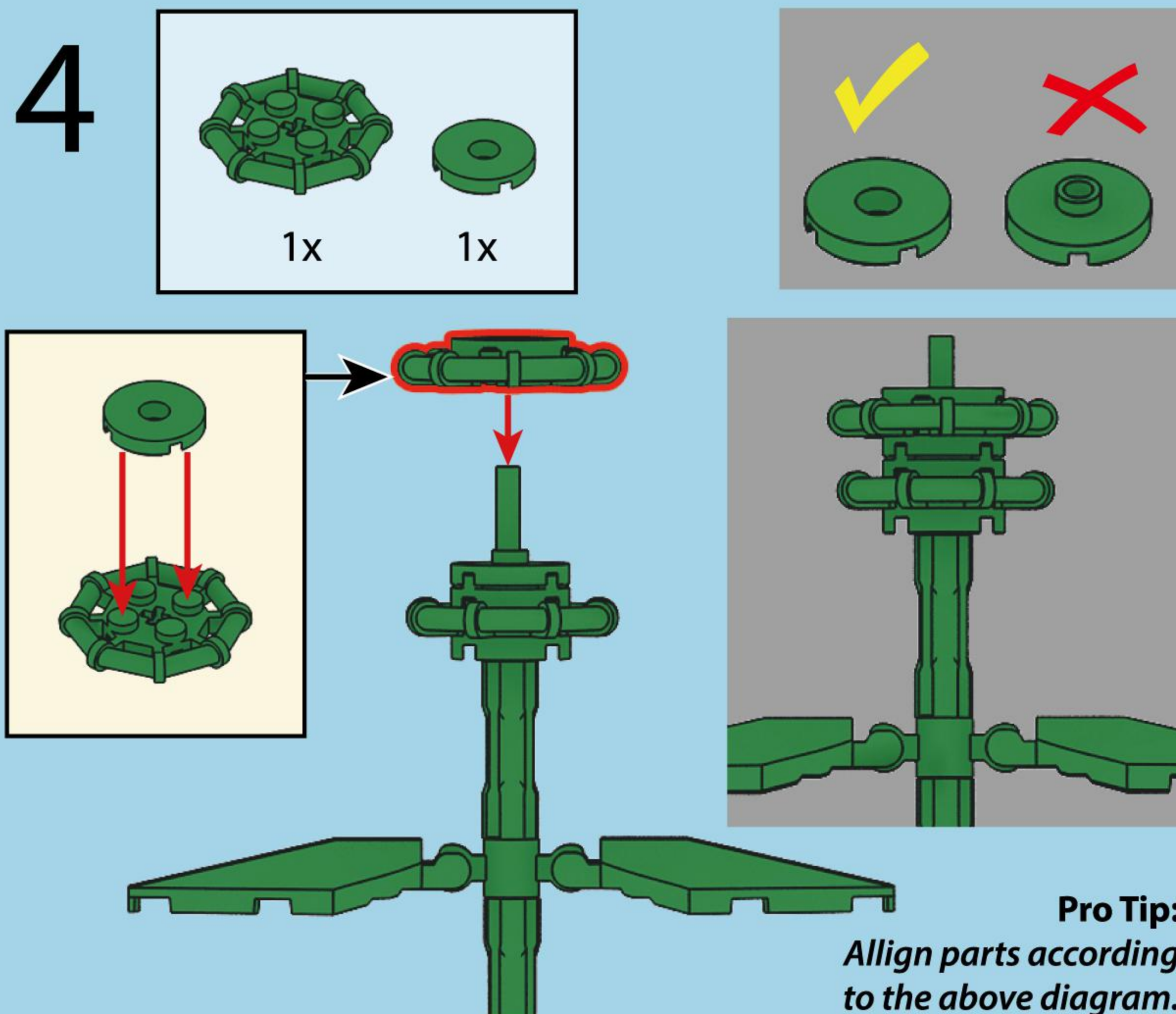
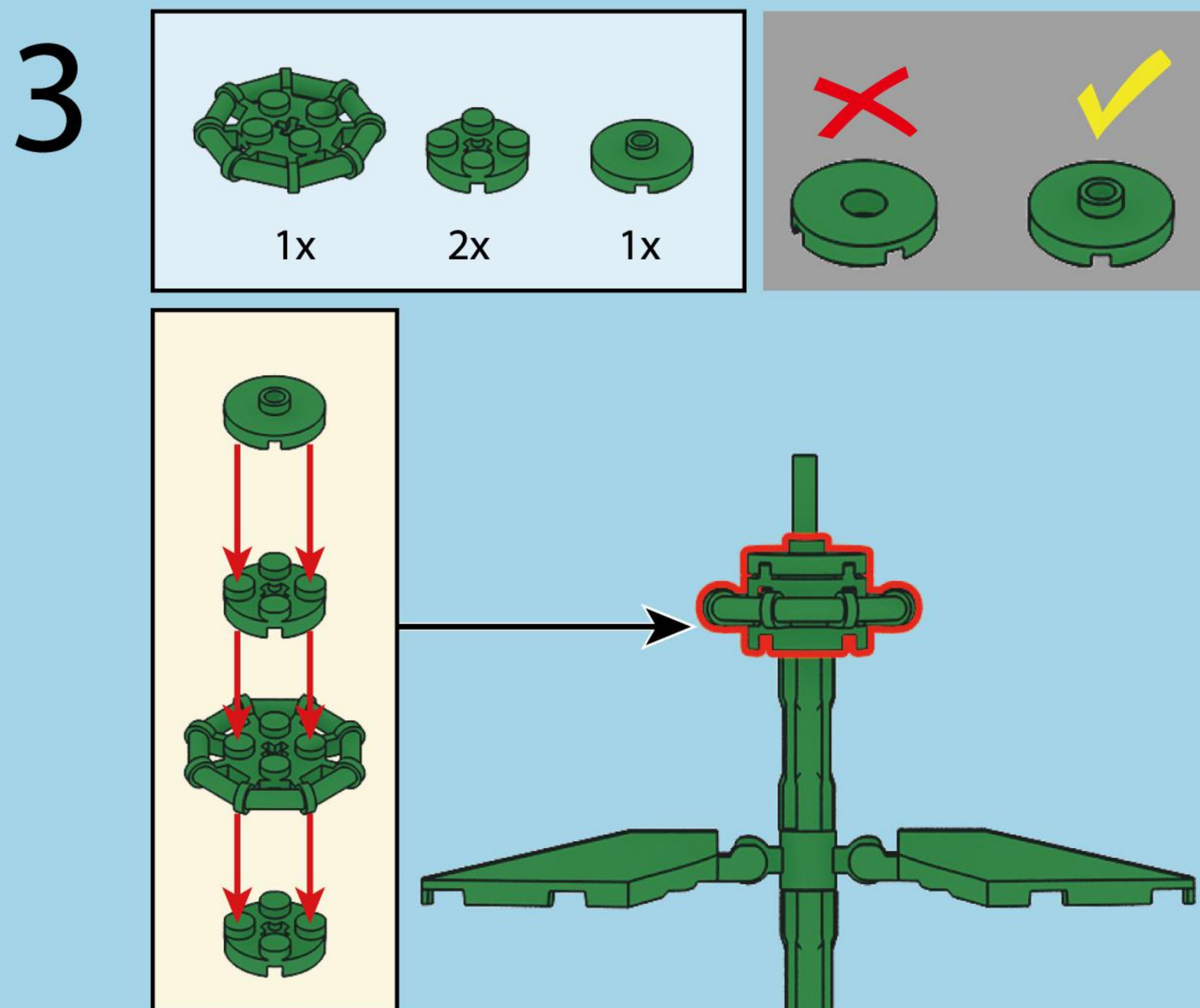
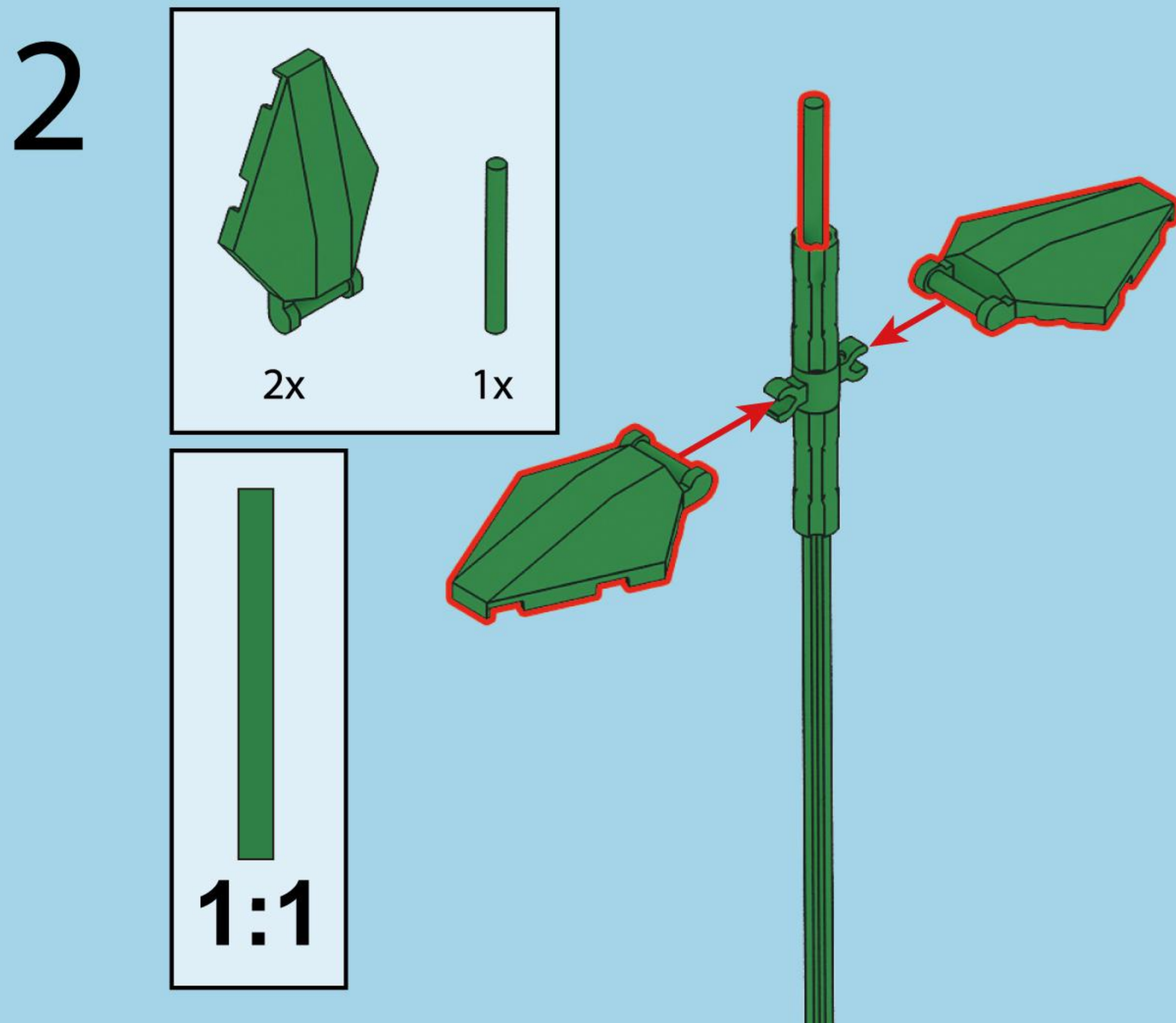
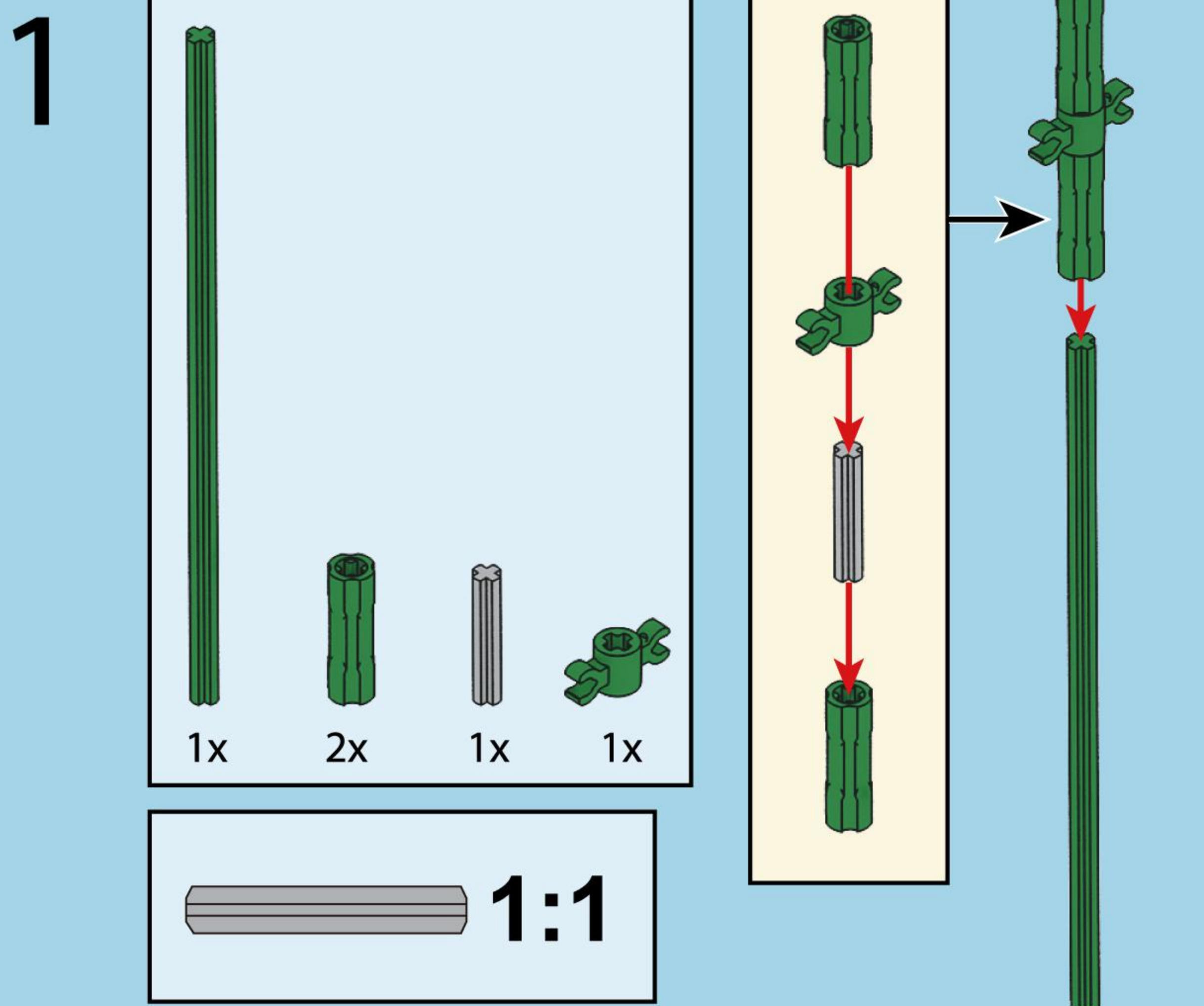
Have questions
or comments?
email:
info@brickcraftofficial.com

F15912/23L72002
72002BFS



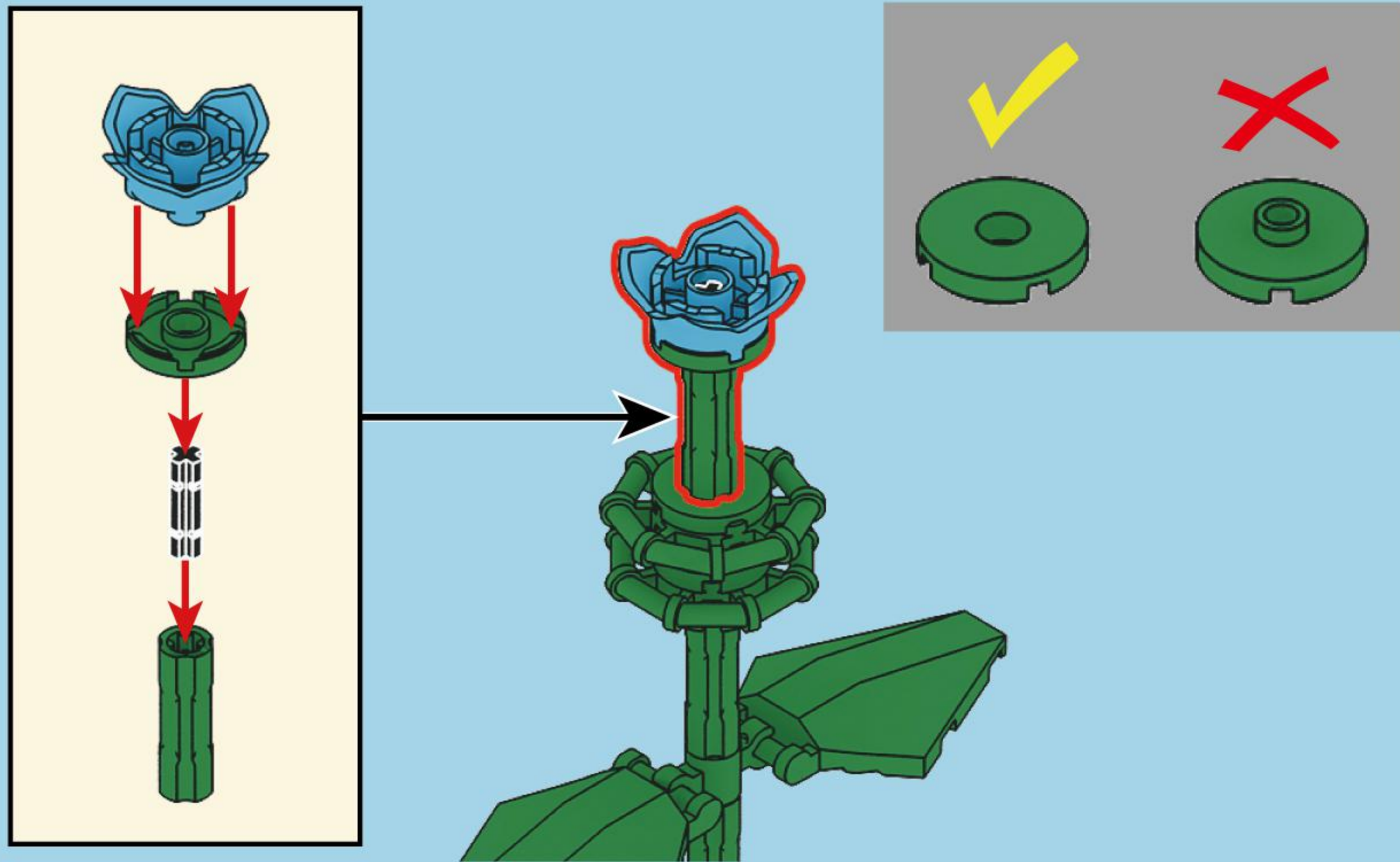
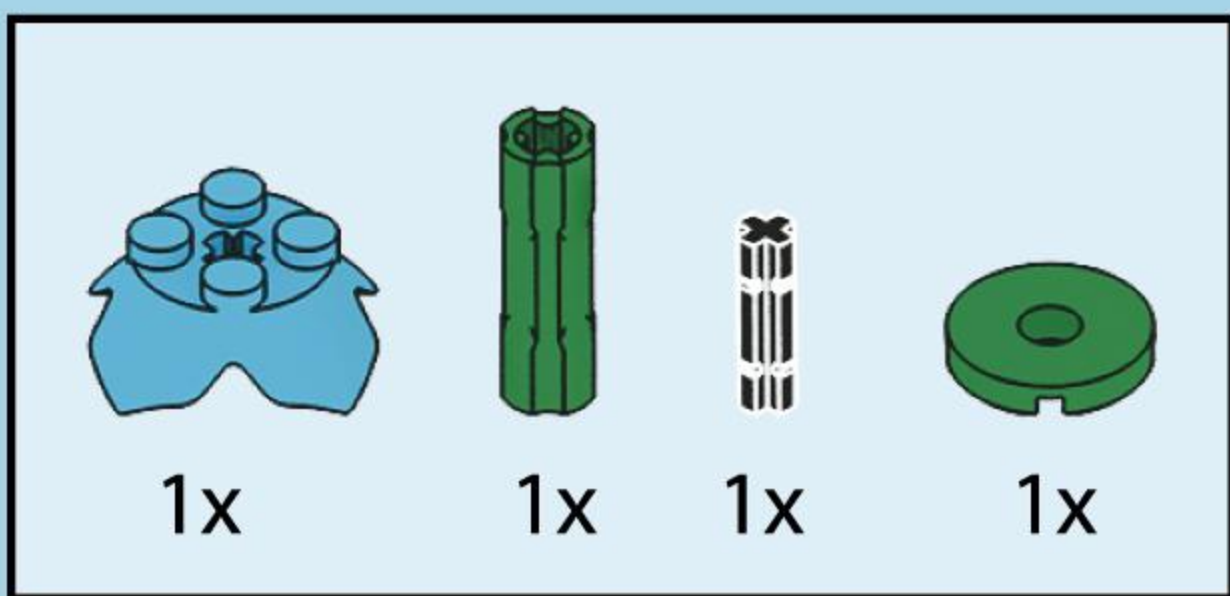
Brickcraftofficial.com

FINAL BUILD

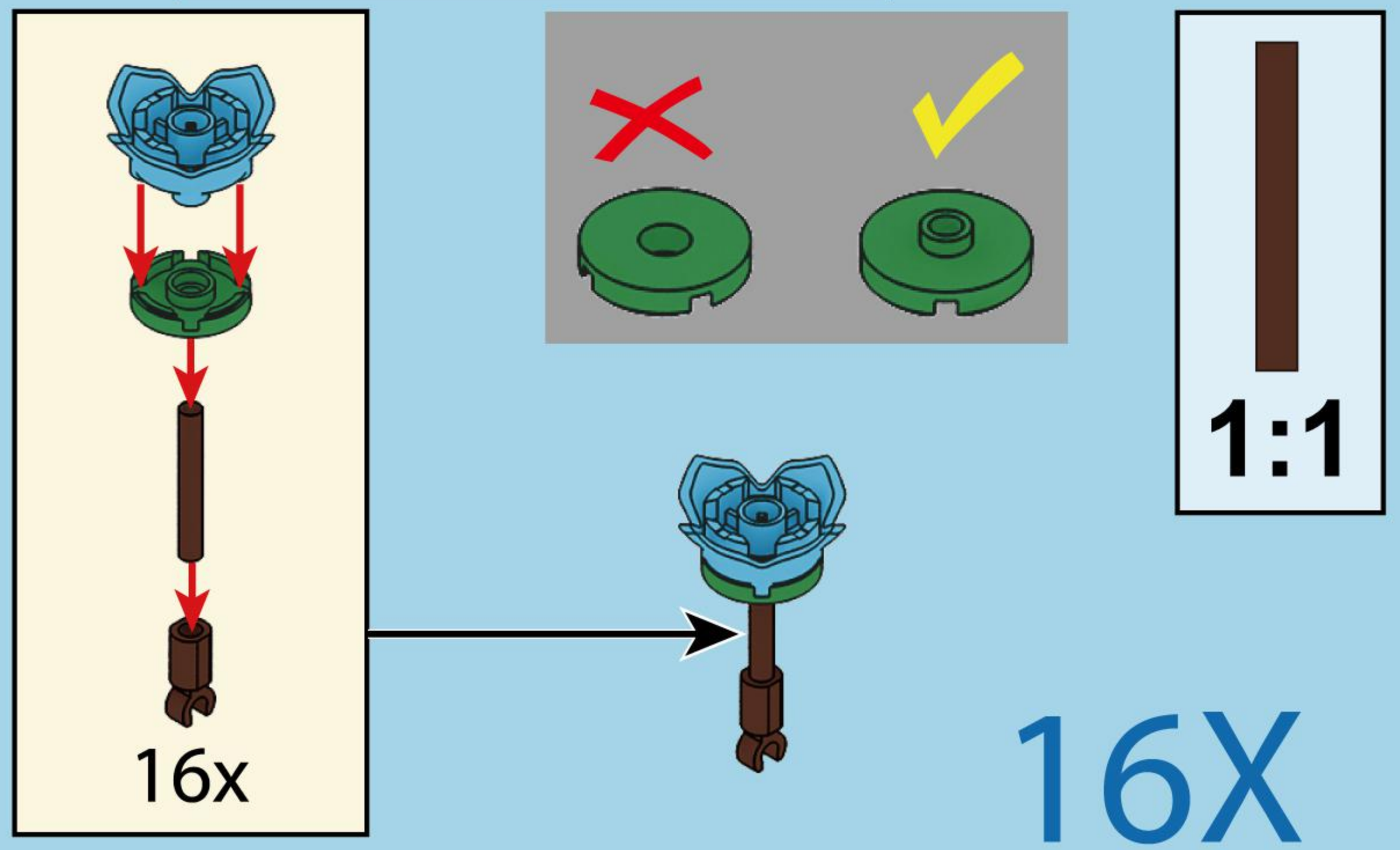
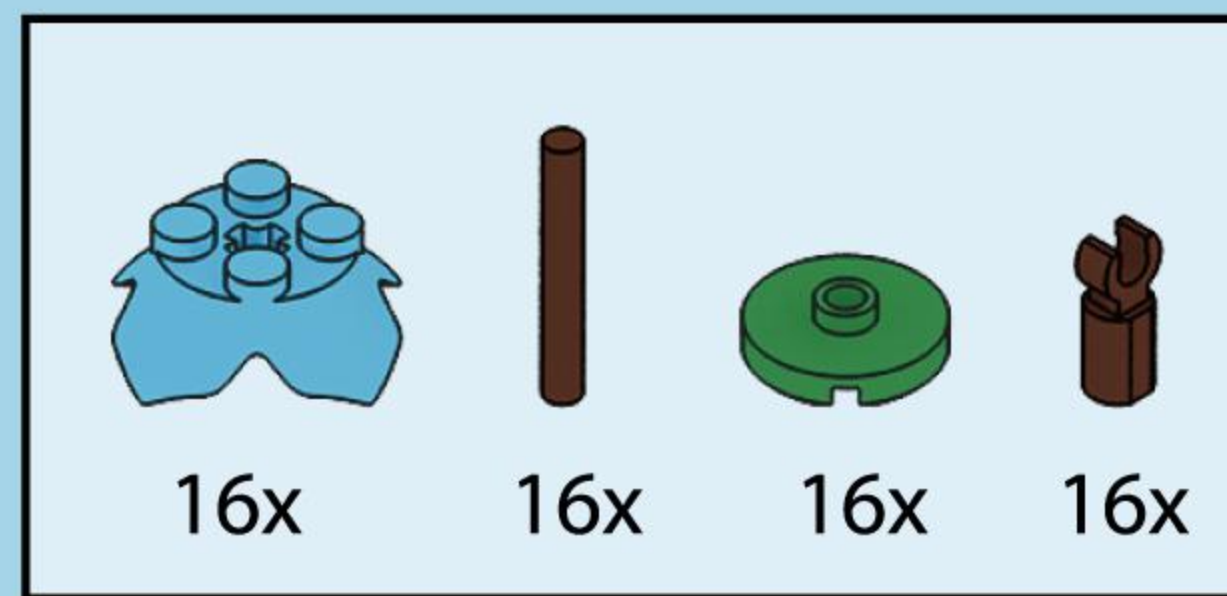


Pro Tip:
Align parts according
to the above diagram.

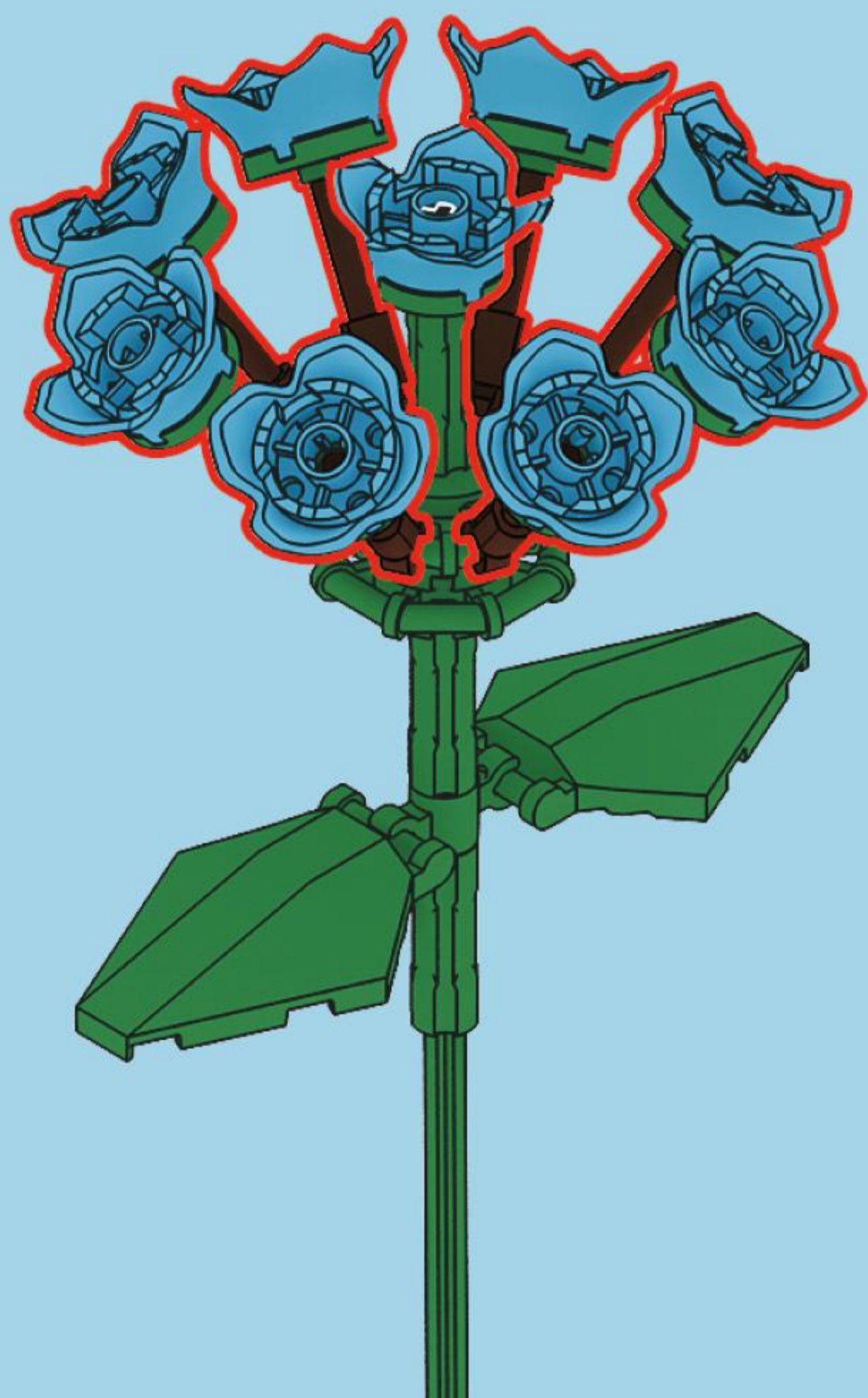
5



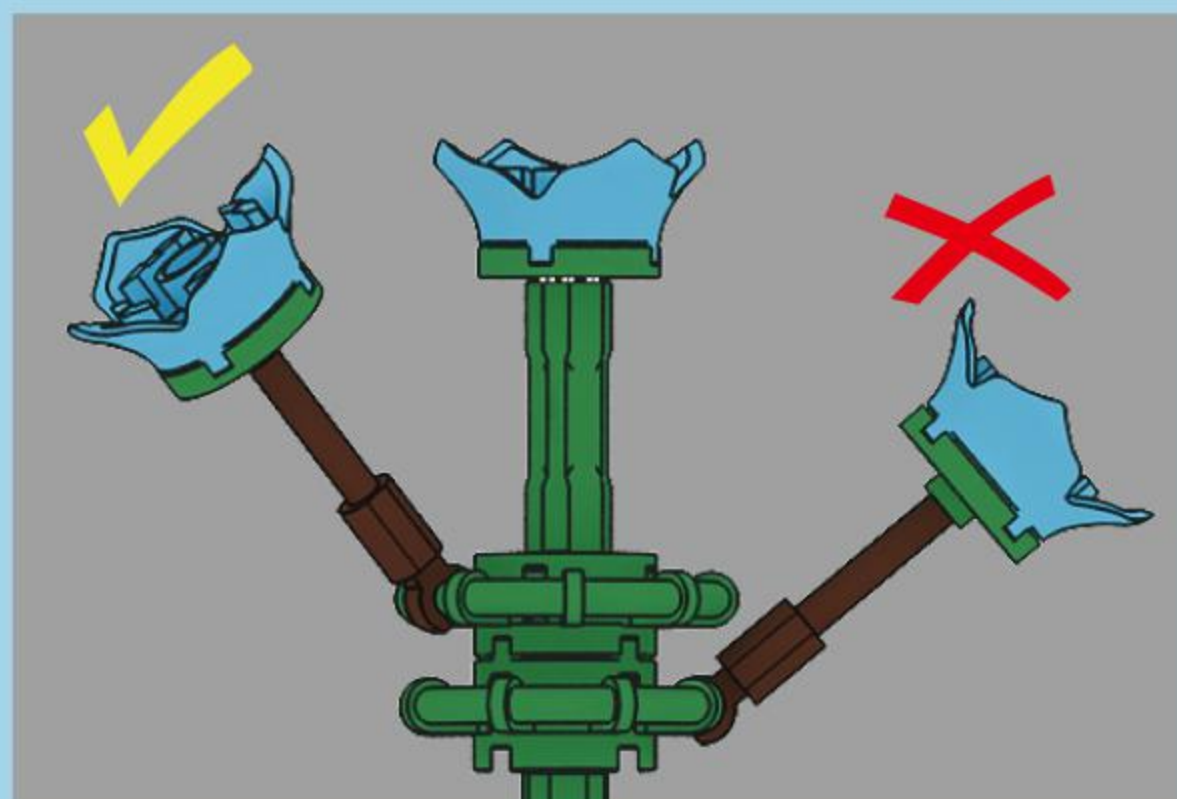
6



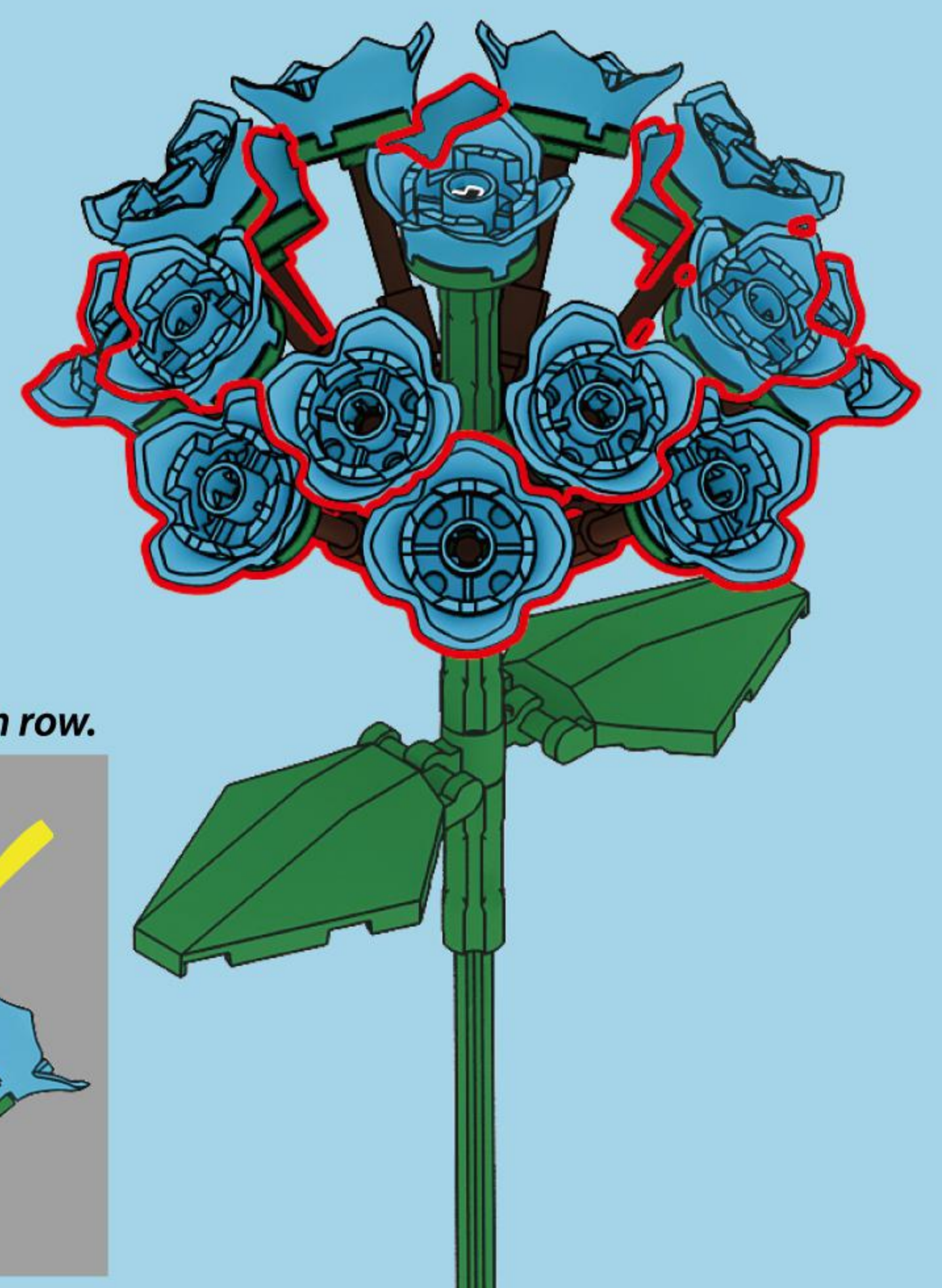
7



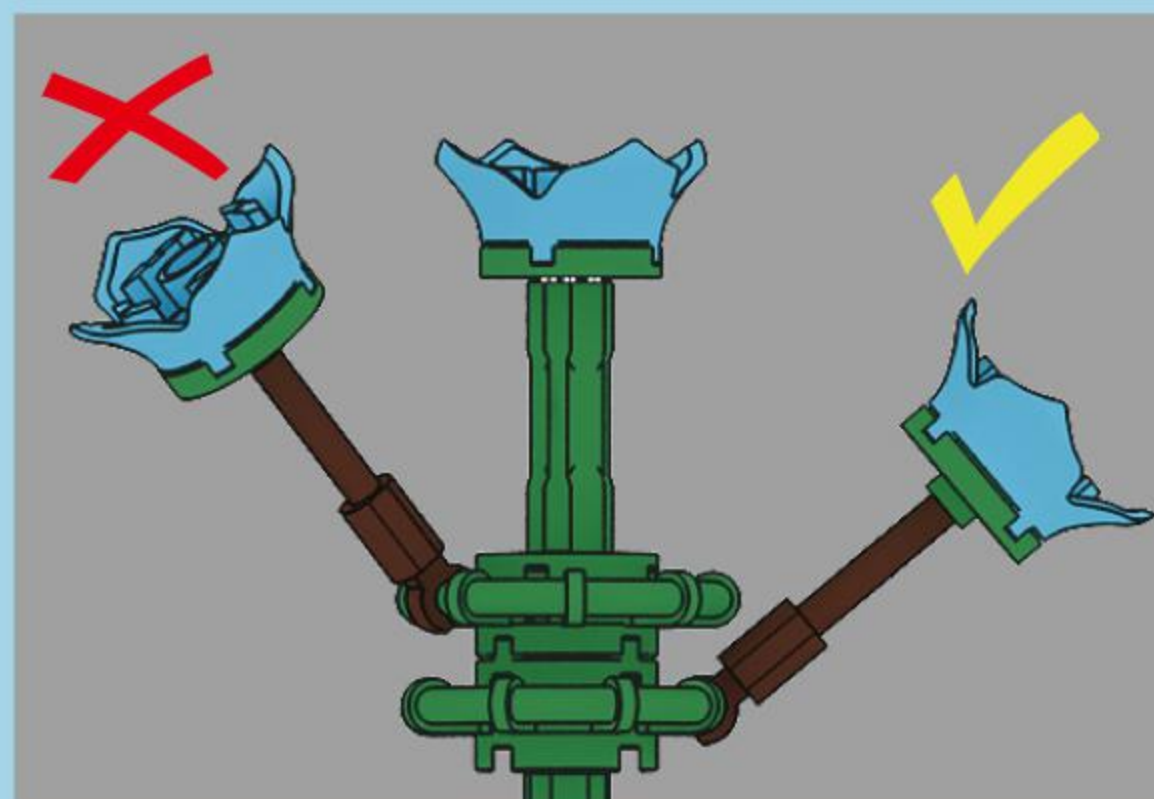
Place on top row.



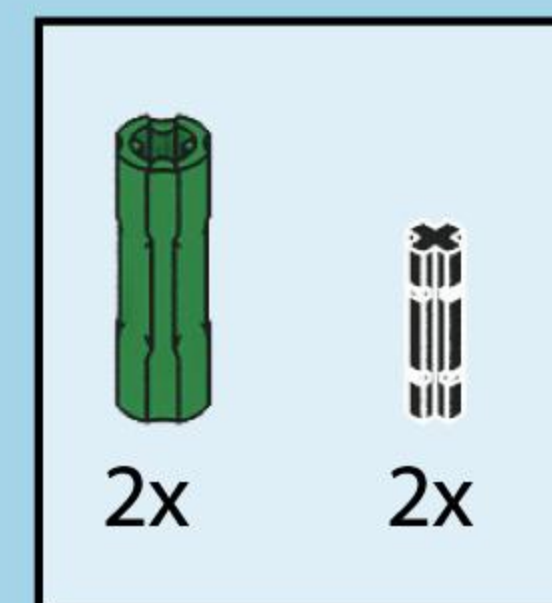
8



Place on bottom row.



9



OPTIONAL
Bonus Step
FOR EXTRA STEM HEIGHT

